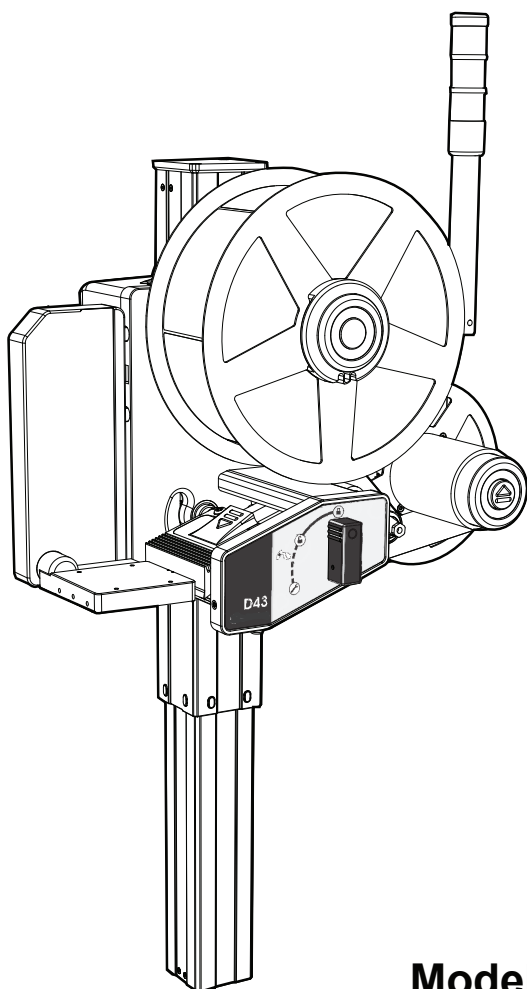


# USER MANUAL



**Models: D43 / T43 / T63**

# SAFETY

---

To make the work environment as safe as possible, follow the instructions, possible laws and regulations and respect the protection, signs and decals that are mounted on or near the machine. Use and service the system with care.

Each user or operator is responsible to ensure that the safety instruction is followed when using the system.

## CAREFULLY READ THE FOLLOWING SAFETY INSTRUCTION

- Each operator shall read and understand this manual before using the system.
- Keep this manual near the system.
- Only use the system when correctly mounted and secured.
- Leave all service work not described in this User Manual to trained personnel.
- Do not remove any covers and do not open any other parts of the system.
- Do not place fingers, hands or other body parts within the working area of the system and keep away from all moving parts during operation.
- The print head can become very hot, do not touch it until it has cooled off.
- Do not spray water on the system.
- Use protective gloves and safety goggles when using cleaning solvent
- Disconnect the power from the system and call in qualified staff under the following conditions:
  1. The main power cable or plug is damaged or worn.
  2. Water or other liquid has been spilled on the system.
  3. The system has been dropped or any parts of it has been damaged.

## WARNING SIGNS

Depending on type of applicator and configuration, the system can be equipped with warning and instruction signs. Follow the prompts on these signs and encourage other people around the system to do so as well.

Example: Crush Hazard

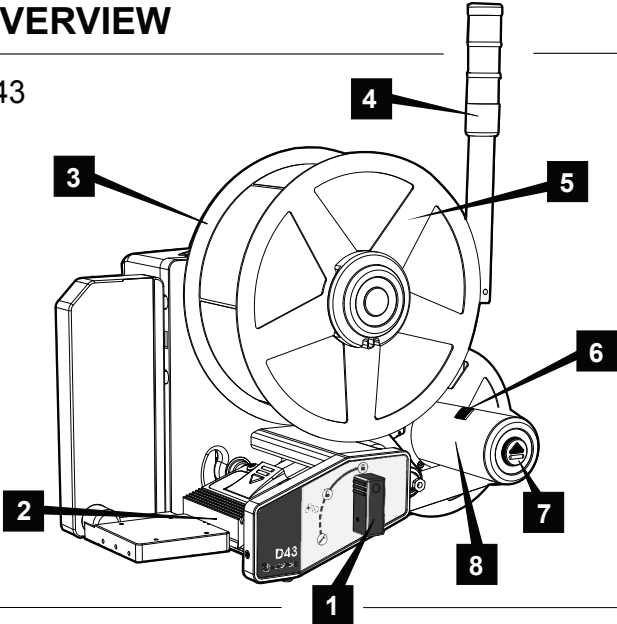
## RISKS

The recommended solvent to use for cleaning the print head and print roller is isopropyl alcohol, also known as isopropanol. It is hazardous in case of eye contact, of ingestion, of inhalation and slightly hazardous in case of skin contact. Isopropyl alcohol is also flammable.

Read, understand and follow the instructions in the Material Safety Data Sheet (MSDS) of the cleaning solvent prior to use.

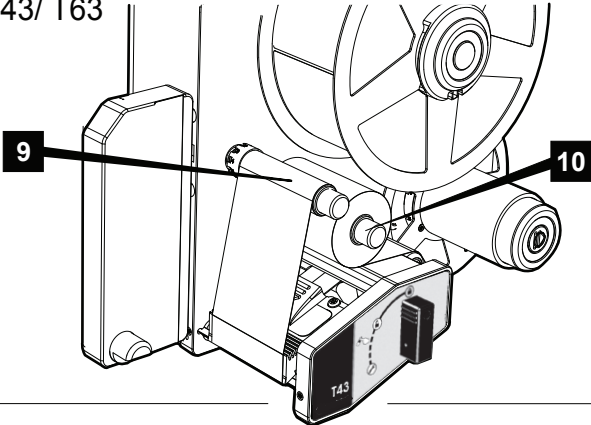
# OVERVIEW

D43



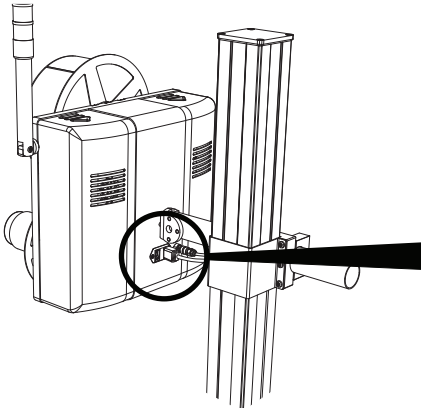
- 1 - Print head handle
- 2 - Print head
- 3 - Inner paper guide
- 4 - Status beacon
- 5 - Outer paper guide
- 6 - Rewinder paper pinch
- 7 - Rewinder pinch release
- 8 - Rewind unit

T43/ T63

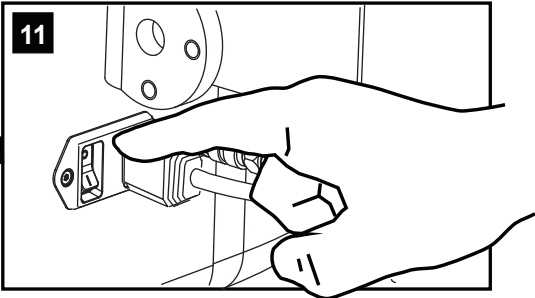


- 9 - Ribbon rewind shaft
- 10 - Ribbon unwind shaft

D43/ T43/ T63

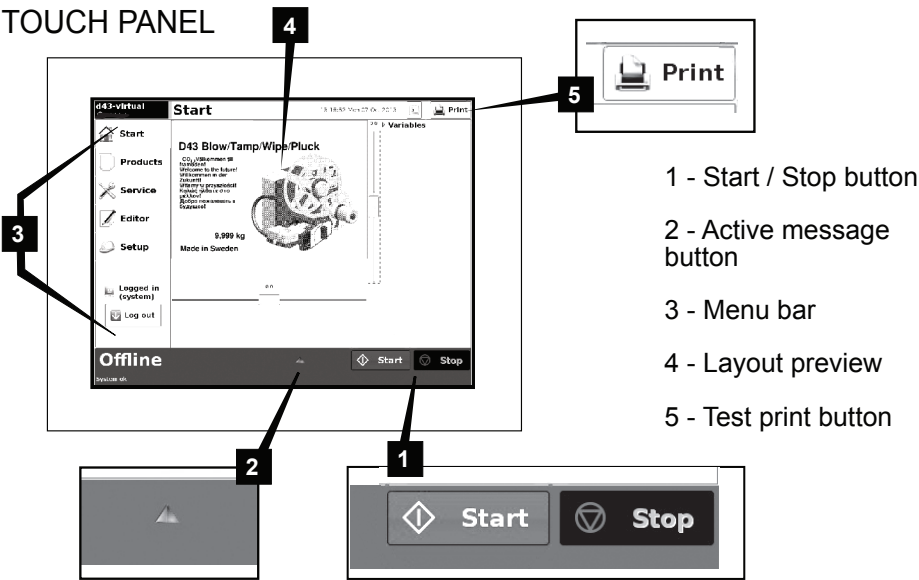


- 11 - Power switch

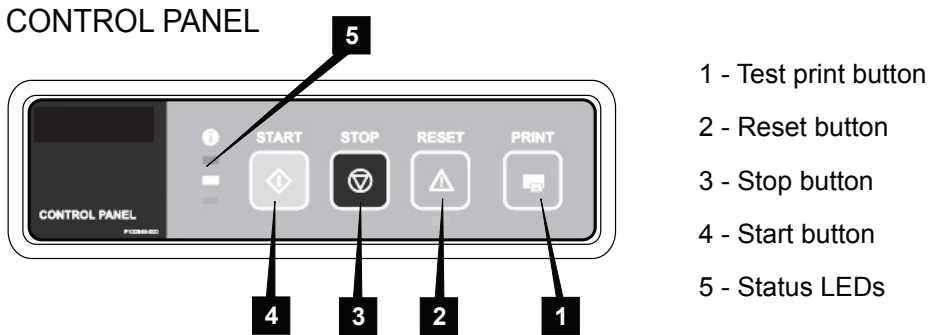


# OVERVIEW

## TOUCH PANEL

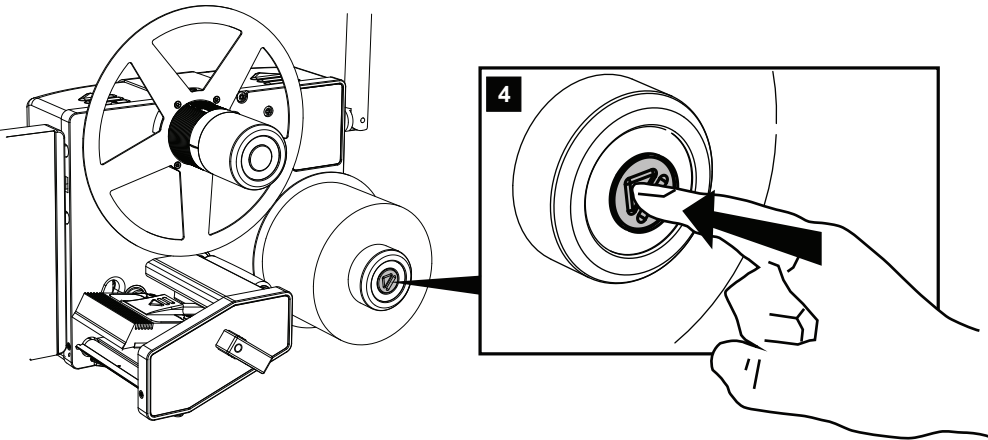
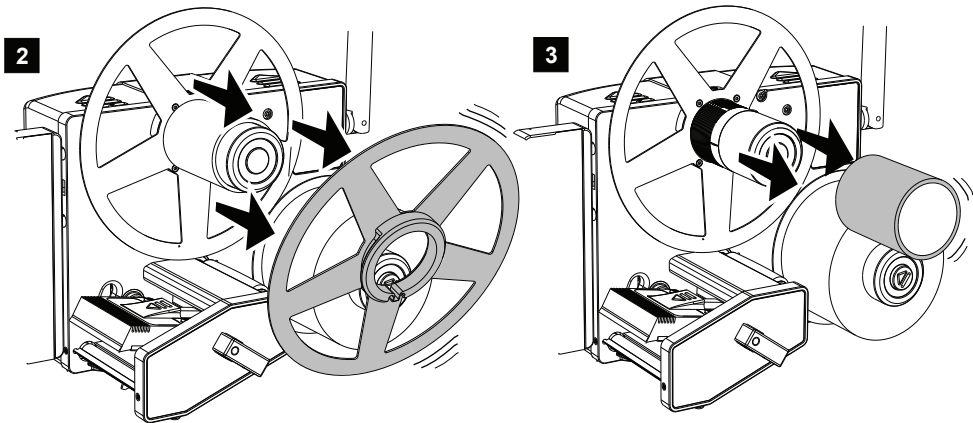
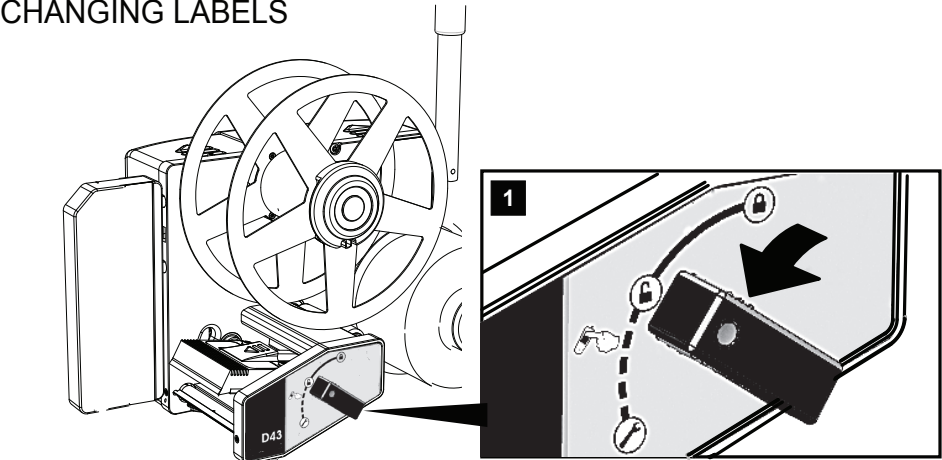


## CONTROL PANEL



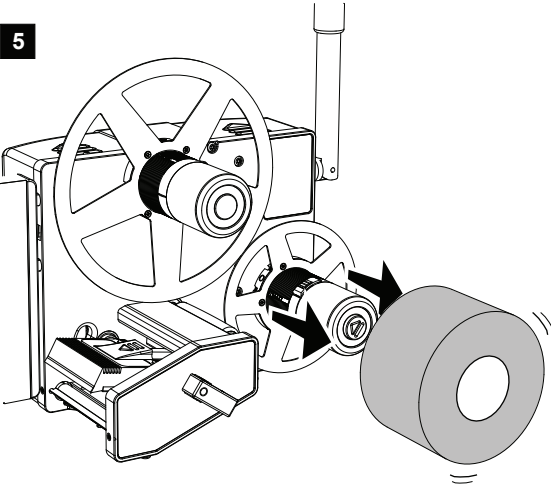
# OPERATION

## CHANGING LABELS

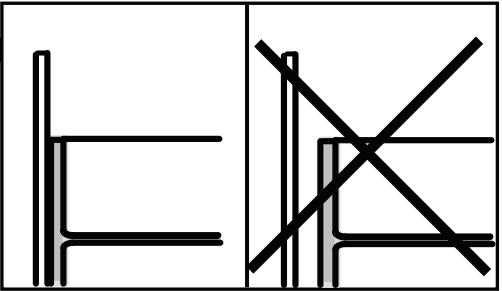
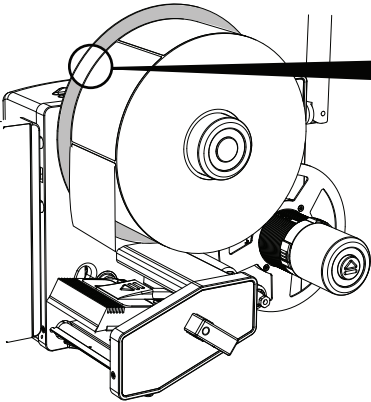
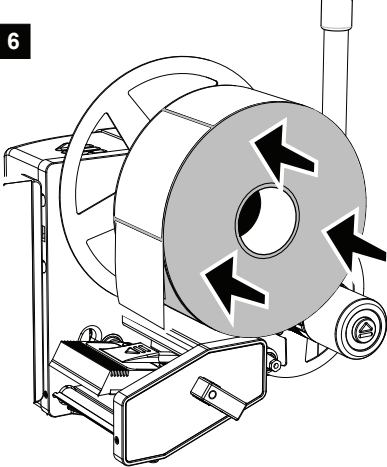


# OPERATION

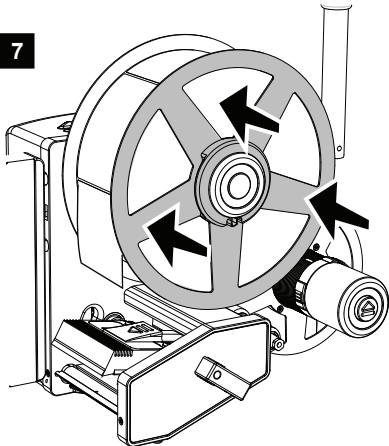
5



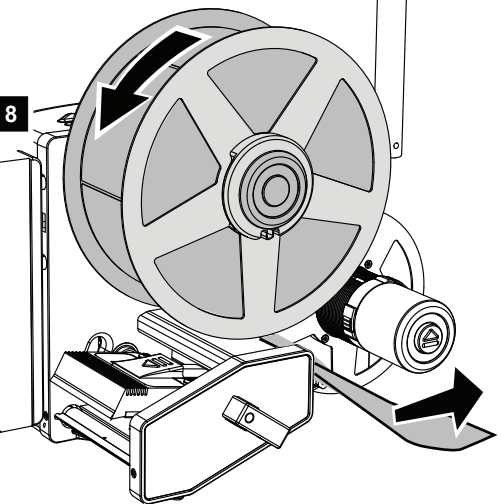
6



7

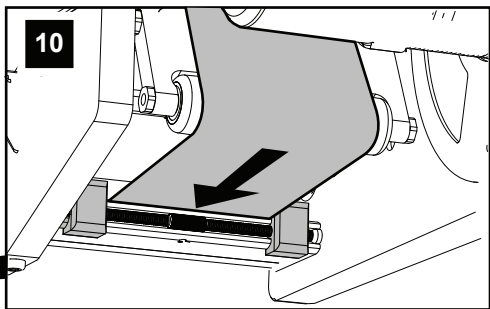
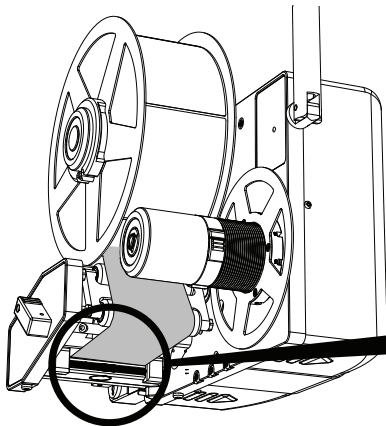
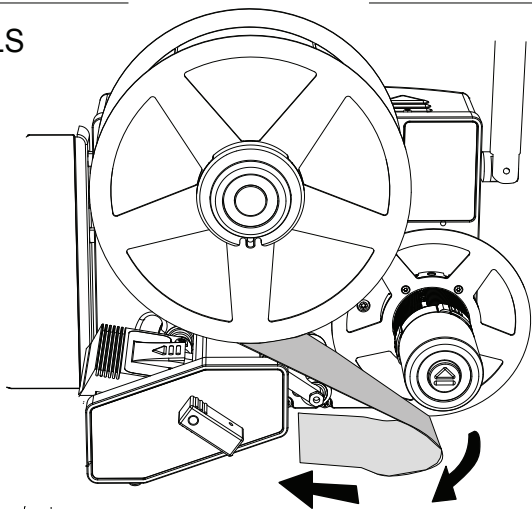


8

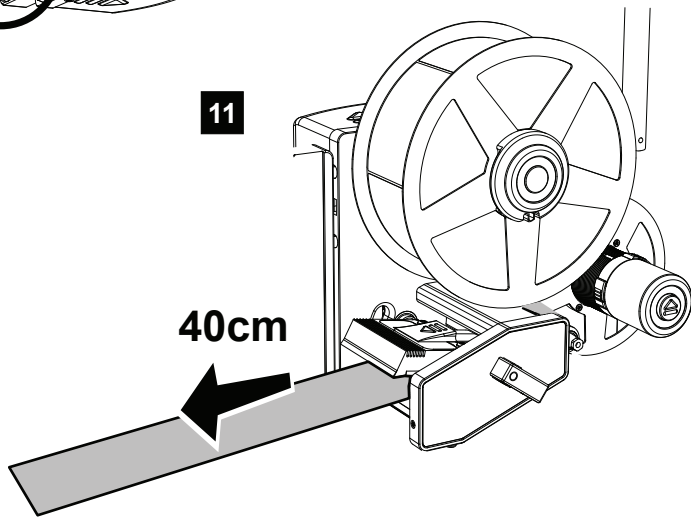


CHANGING LABELS

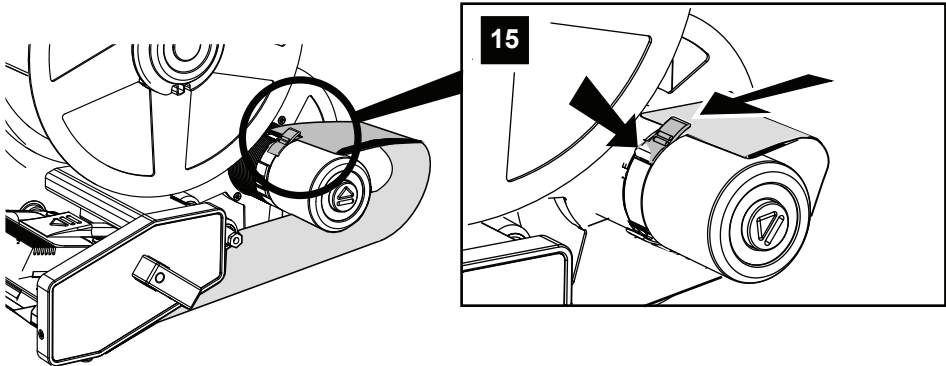
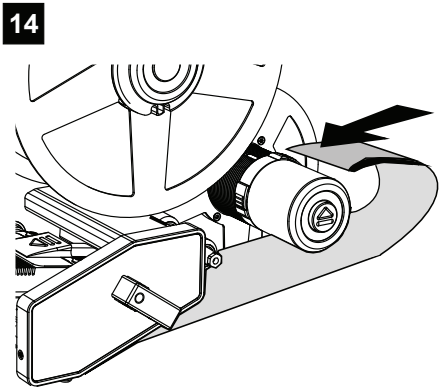
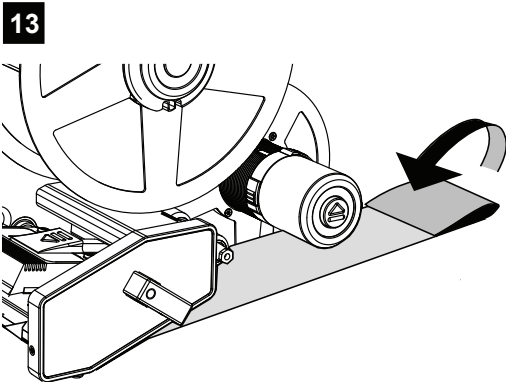
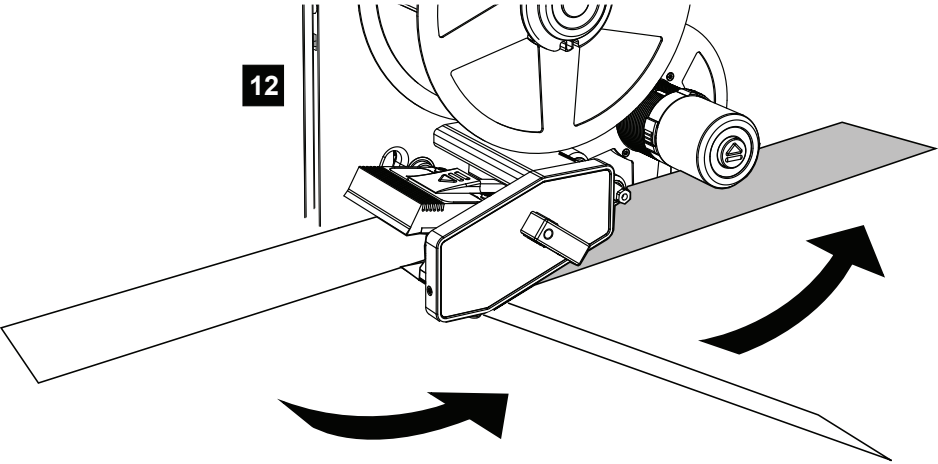
9



11

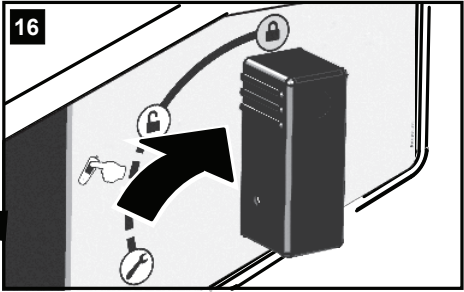
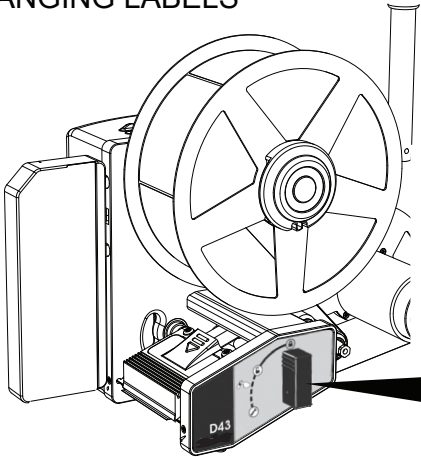


# OPERATION

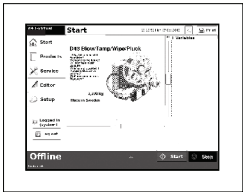
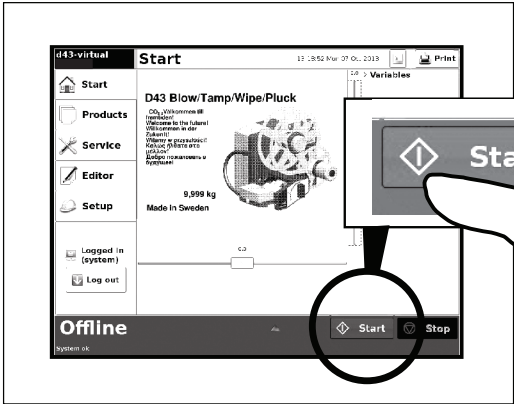




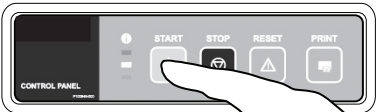
# CHANGING LABELS



17

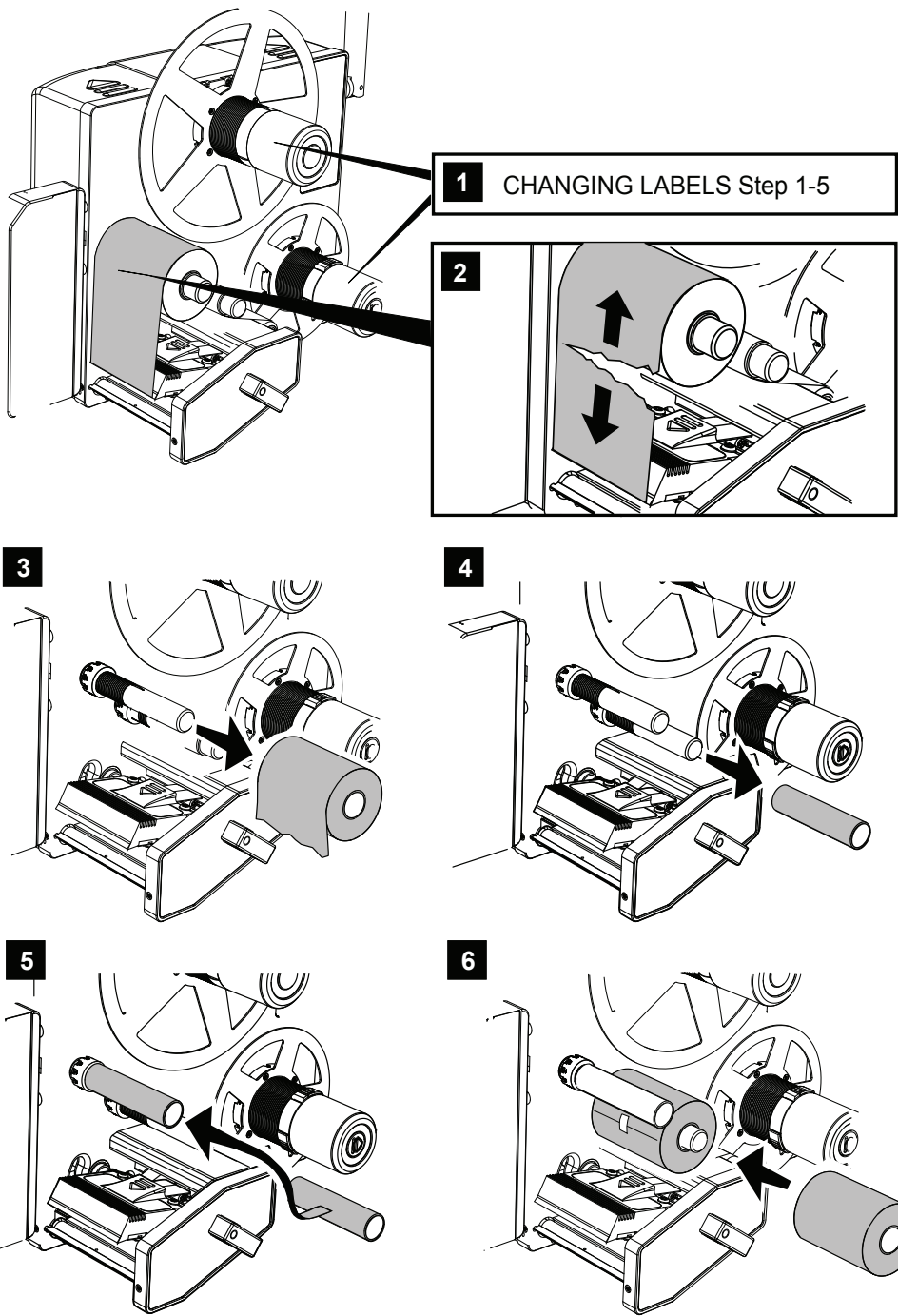


OR



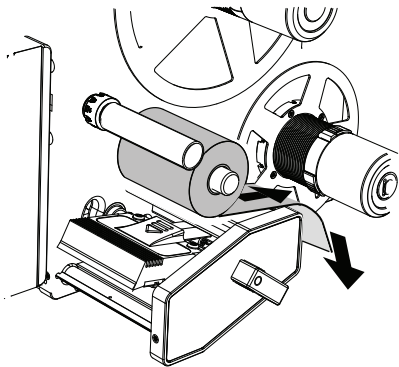
# OPERATION

## CHANGING RIBBON (T43/T63)

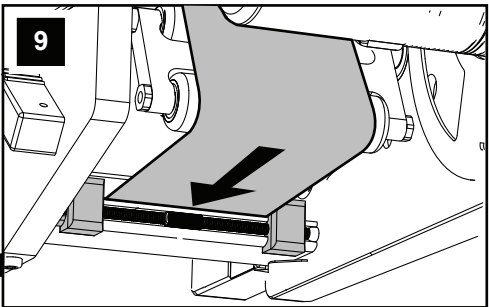
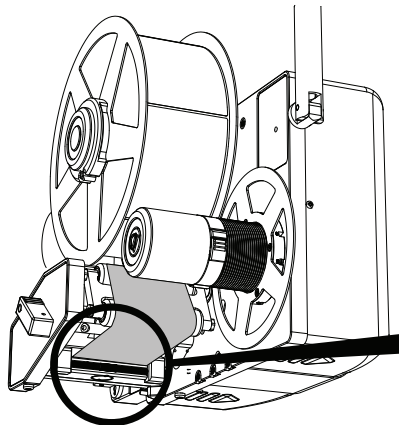
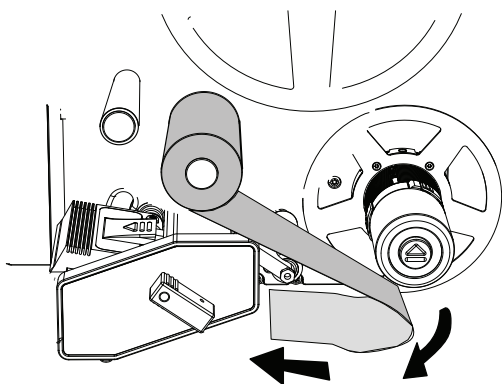


# CHANGING RIBBON

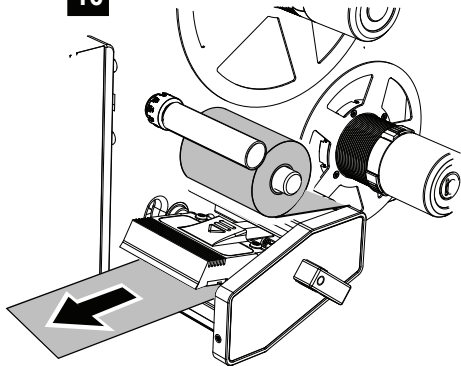
7



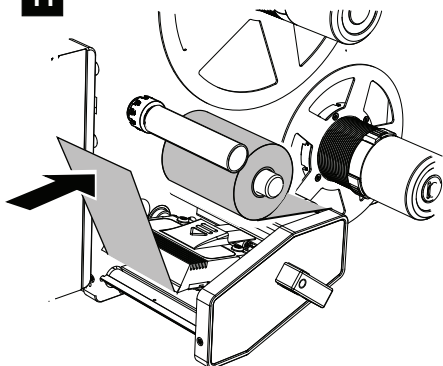
8



10

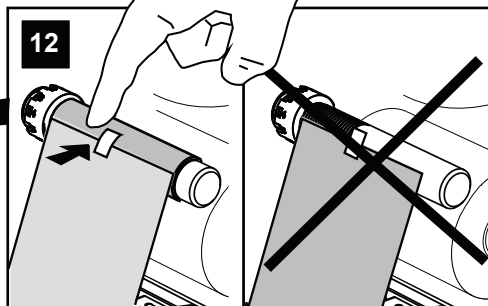
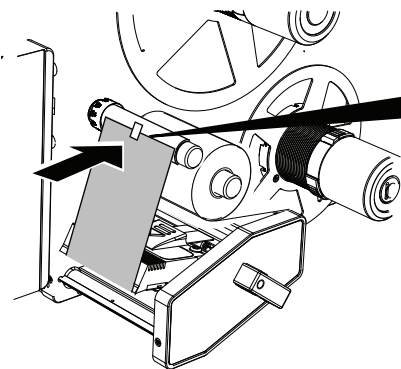


11

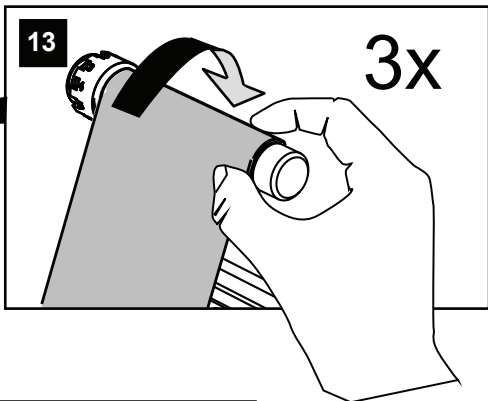
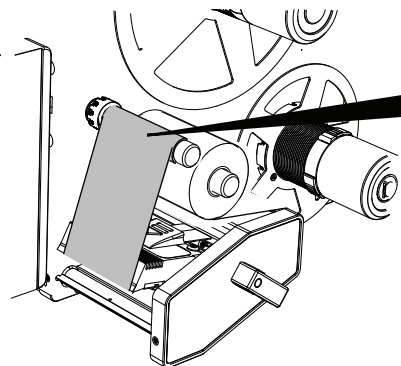


# OPERATION

## CHANGING RIBBON

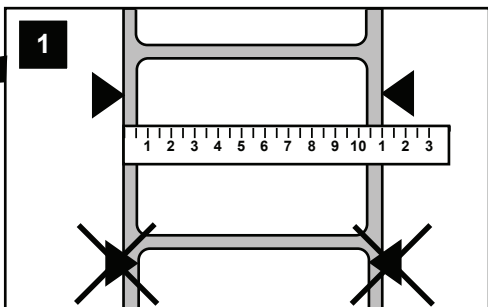
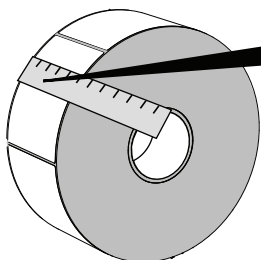


Always use a bobbin between the ribbon and the ribbon rewind shaft

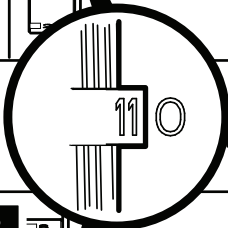
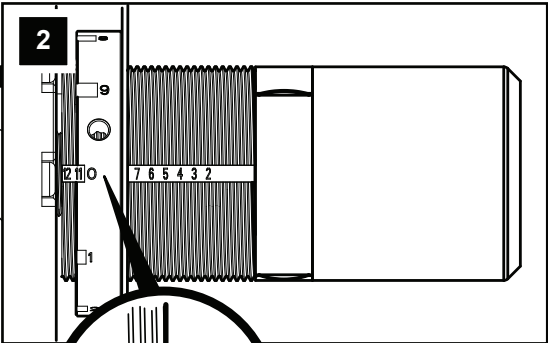
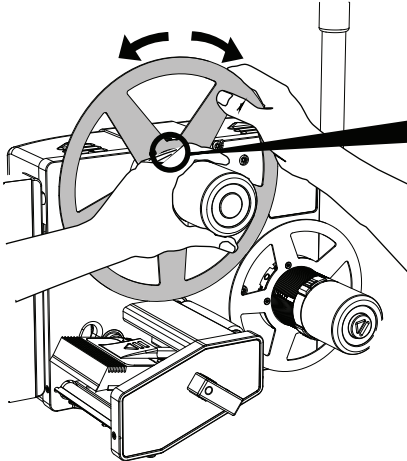


**14** CHANGING LABELS Step 6-17

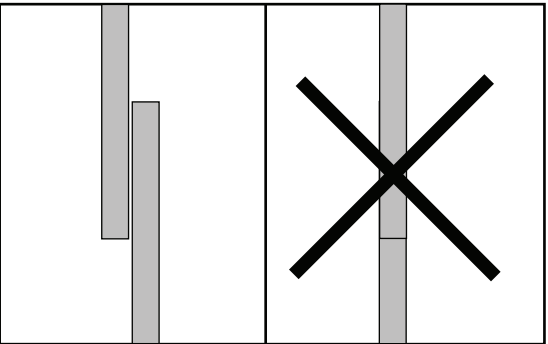
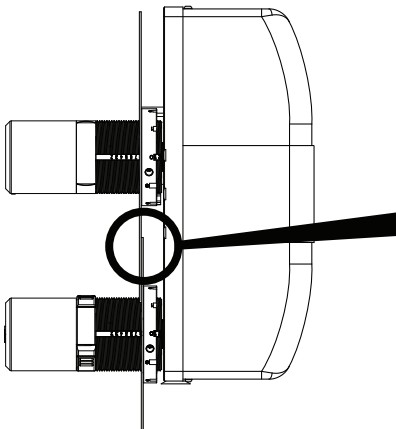
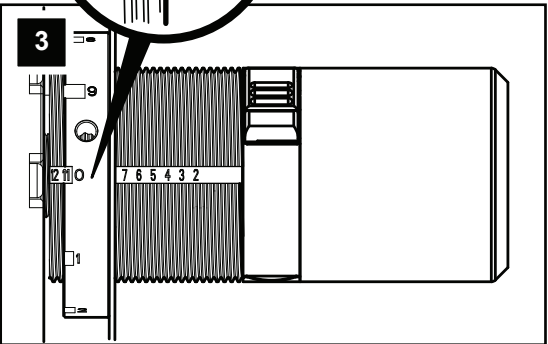
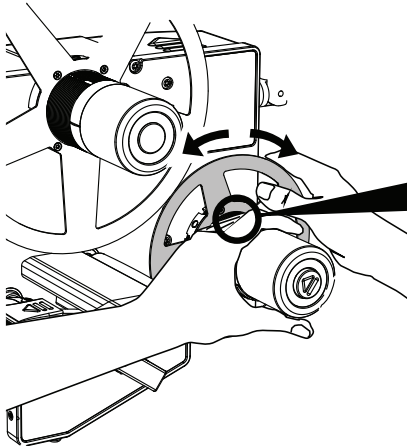
## LABEL WIDTH SETTING



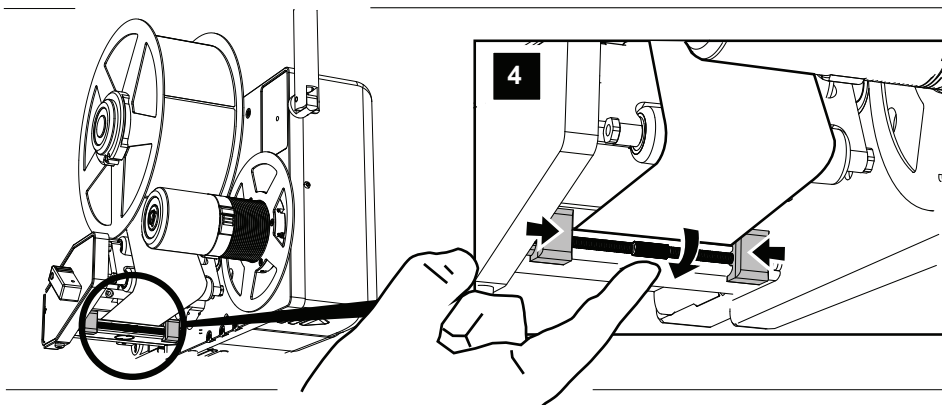
LABEL WIDTH SETTING



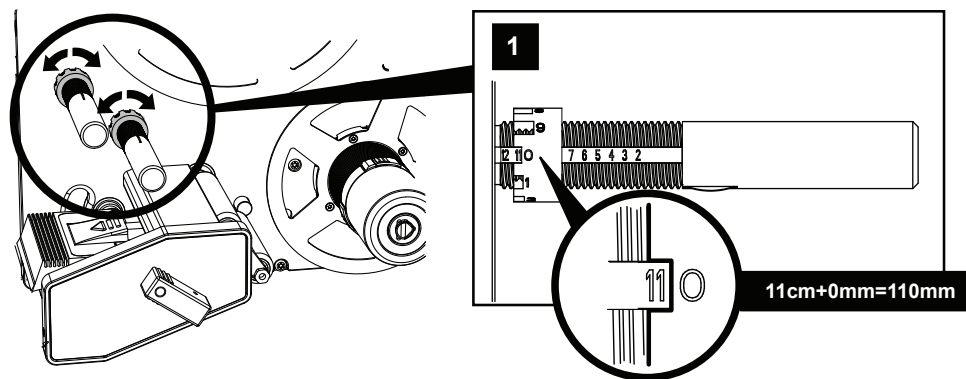
11cm+0mm=110mm



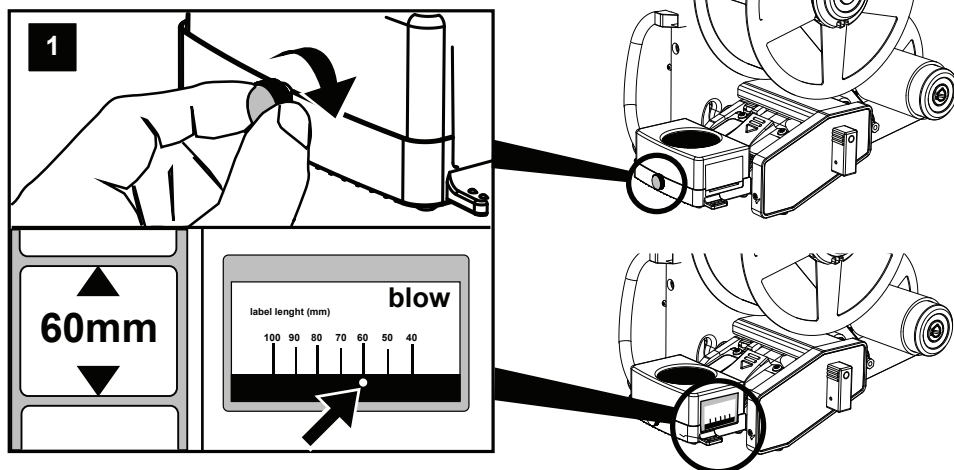
# OPERATION



## RIBBON WIDTH SETTING (T43 / T63)

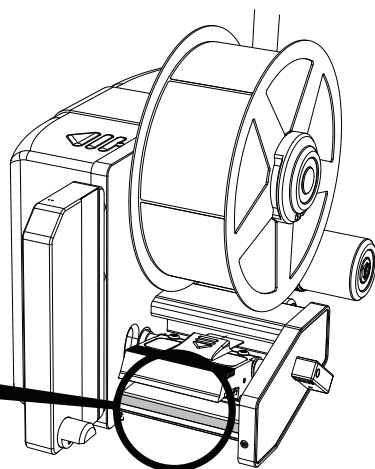
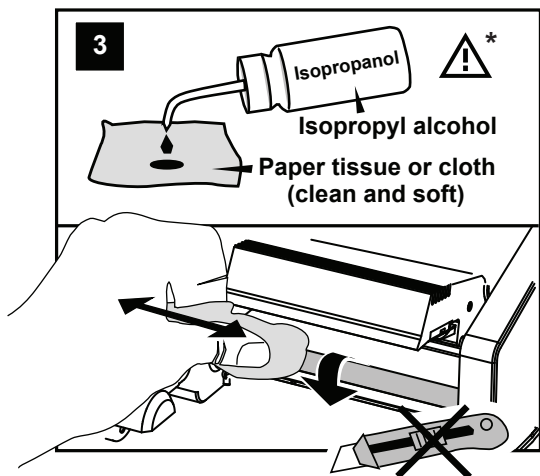
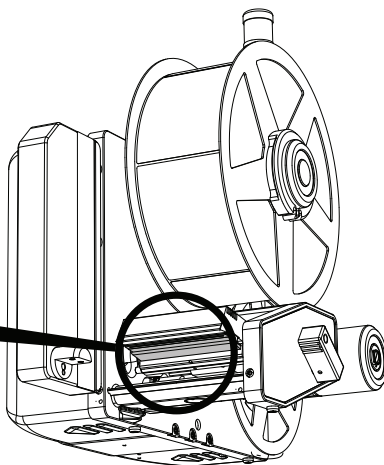
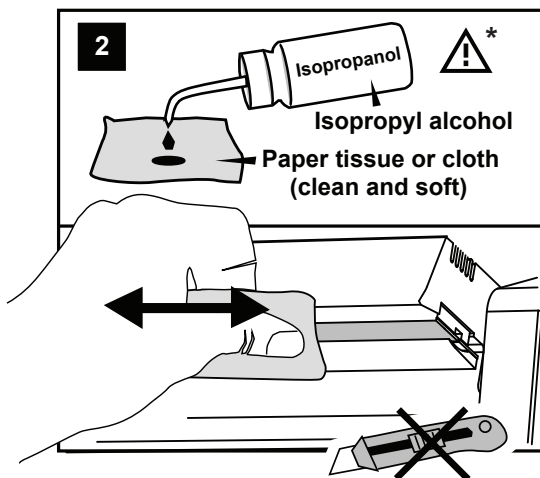
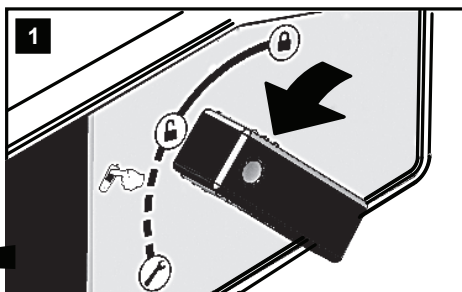
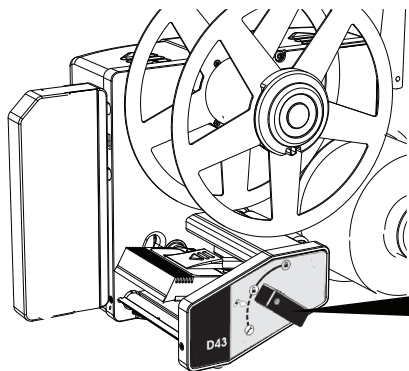


## LABEL LENGTH SETTING (BLOW APPLICATOR)



# CLEANING

## CLEANING PRINT HEAD AND PRINT ROLLER



\* PLEASE READ THE SAFETY INSTRUCTIONS BEFORE USE!

# BASIC TROUBLESHOOTING

## TEXT ON LABEL BAD QUALITY / STRIPES



- Verify that correct label quality and correct ribbon quality is used.
  - Clean the print head (see CLEANING)
- If not OK, contact your service engineer to replace the print head

## TEXT WRONG POSITIONED ON LABEL (WIDTH)



- Check that correct label size is used for the print job selected
- Verify the paper position (see LABEL WIDTH SETTING)

If not OK, contact your service engineer to correct the layout

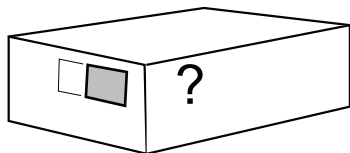
## TEXT WRONG POSITIONED ON LABEL (LENGTH)



- Check that correct label size is used for the print job selected
- Clean the print roll, print head and print head profile (see CLEANING)

If not OK, contact your service engineer to replace the print roll

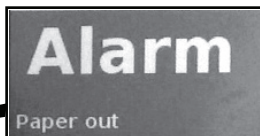
## LABEL NOT APPLIED OR MISPOSITIONED ON PRODUCT/BOX



- Clean the print roll, print head and print head profile (see CLEANING)
- If using round or non rectangular labels, verify the paper guide position (see LABEL WIDTH SETTING)

If not OK, contact your service engineer

## PAPER OUT ALARM AFTER PAPER CHANGE



- Clean print roll, print head and print head profile (see CLEANING)

If not OK, contact your service engineer to replace the print roll

## IN CASE OF OTHER FAULTS

1. Do not turn off the machine
2. Note the time and symptom
3. Contact your service engineer